



**MODEL J – STYLE K & M
HERMETIC COMPRESSORS**

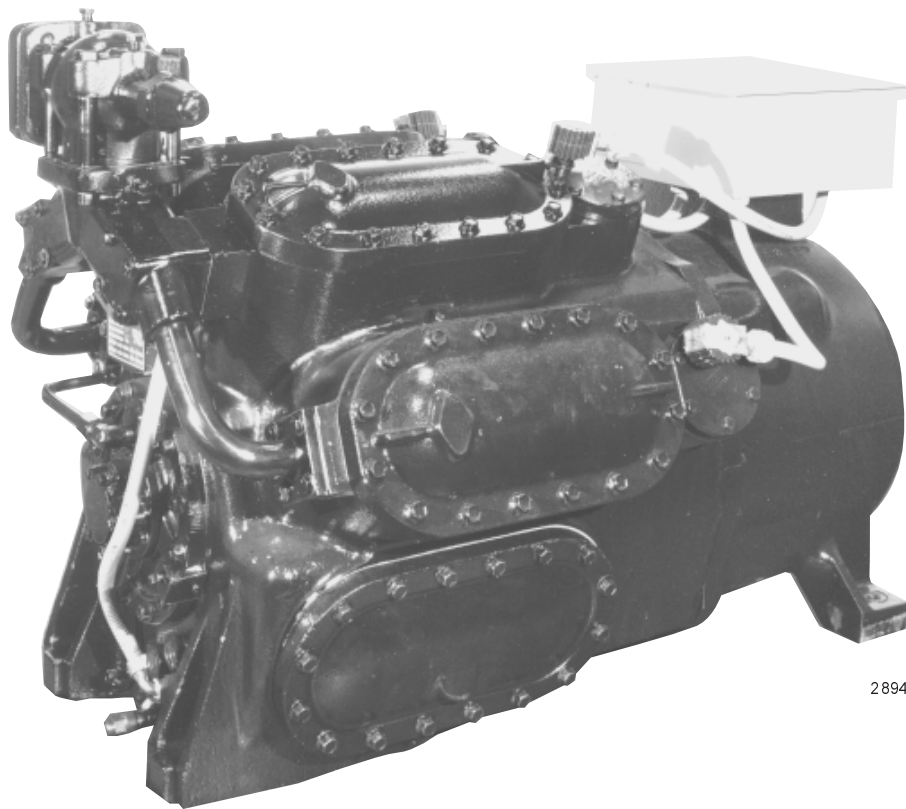
RENEWAL PARTS

Supersedes: 180.23-RP5 (698)

Form 180.23-RP5 (1298)

**MODELS
J43, J63, J83
J44, J64, J84**

(See Page 2 for Complete Model Nomenclature)

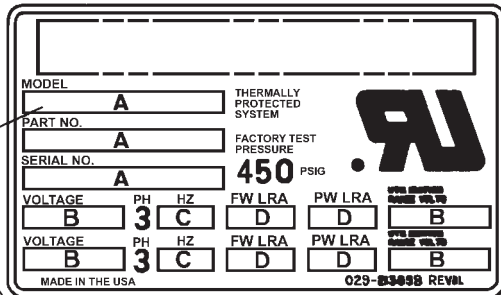
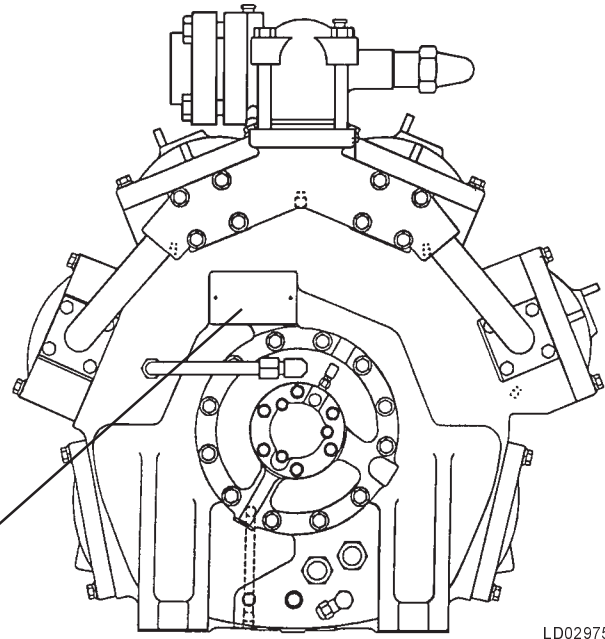


28946A

UNIT NOMENCLATURE

COMPRESSOR IDENTIFICATION

Each compressor is identified by nomenclature as shown below. The nomenclature is printed on a data plate which is located near the oil pump as shown in Fig. 1. When contacting the factory or ordering renewal parts, include the complete Nomenclature, Serial Number, and Date Code. Be sure that these numbers are copied accurately.



LD03063

LD02975

FIG. 1 – COMPRESSOR DATA PLATE

J **K** **4** **3** **1** — **M** **H** **46/50** **S**

Compressor Series —————

Style —————

Style K with Terminal Box and Motor Protector
Style M without Factory Mounted Motor Protector

Number of Cylinders —————

4, 6, or 8

Displacement Code —————

	NO. OF CYLINDERS		
	4	6	8
3 = Short Stroke	3.2"	3.0"	3.1"
4 = Long Stroke	3.8"	3.6"	3.7"

Number of Unloaders —————

3 = (8 Cyl. Compr.) - % Loading: 100,75,50,25
2 = (8 Cyl. Compr.) - % Loading: 100,75,50
2 = (6 Cyl. Compr.) - % Loading: 100,66,33
1 = (8 Cyl. Compr.) - % Loading: 100,50
1 = (6 Cyl. Compr.) - % Loading: 100,66
1 = (4 Cyl. Compr.) - % Loading: 100,50

Motor Vendor
S = A. O. Smith

Motor Voltage Code

17 = 200-3-60
28/59 = 230-3-60/190-3-50
40 = 380-3-60
46/50 = 460-3-60/380/415-3-50
58/70 = 575-3-60/500-3-50
63 = 220-3-50
43 = 440-3-50
64 = 346-3-50
36 = 363-3-50

Motor Efficiency Rating
H = High Efficiency
Blank = Standard Efficiency

Motor Size Code
M, N, P, Q, S, T or V

GENERAL DESCRIPTION

Model JK and Model JM compressors share the same compressor bodies and components with the following difference: Model JK is supplied with a factory mounted motor protector, and the JM is supplied LESS the factory mounted motor protector. Model differentiation was required to meet UL requirements.

York Model J Styles K And M Semi Hermetic Compressors are industrial duty reciprocating type compressors designed to meet refrigerating and air conditioning requirements using either R-22 or R-134a. They are available in 4, 6, and 8 cylinder models in either “short stroke” or “long stroke” versions, as designated by the third character in the compressor model number and described below.

Model J compressor unloading capabilities allow the compressor flow capacity to modulate as refrigeration load changes occur, improving part load operating efficiency and decreasing operating costs. Nominal compressor speeds at 60 Hz duty are 1750 RPM; or 1450 RPM at 50 Hz duty.

Evolution of the J series compressor has resulted in a field serviceable unit that with proper maintenance will provide years of reliable cooling service.

J Styles K and M compressors boast an improved oil management system for control of oil flow within the compressor, along with an added oil temperature safety system. This improved oil management system significantly decreases oil carry over which improves system heat transfer, operating efficiency, and reliability.

The new oil management system consists of new motor end bearing head that incorporates an oil control bearing outboard of the two main bearings, and new oil return ports that direct oil back into the crankcase. Oil passes through an eductor prior to entering the crankcase. Oil that may accumulate in the motor housing will be transported to the crankcase via the eductor pick-up tube.

Crankcase ventilation incorporates an oil mist precipitator built into the new pump end bearing head. Vent-

ing from this bearing head to the suction plenum is through an external pipe connection.

Cylinder O-rings are now used on all permanently loaded cylinders as well as the cylinders that can unload. These features are shown in Fig. 6, page 10 of the maintenance manual, Form 180.23-M5.

Connecting rods now have a drilled port added to provide forced lubrication to the wrist pin. This is essential for **POE** lubricants only. Either rod can be used with mineral oil lubricants.

Oil temp controls include a ‘high oil temp’ cutout set at 160°F and an ‘oil temp inhibit’ feature that requires oil temperature to be at least 15°F above ambient at start up. If this condition is not satisfied, the starting circuit will not engage. This start inhibit safety ensures that migration during the off cycle will not build excessive refrigerant in the oil. This prevents oil foaming and oil pressure loss.

Normal start up procedures include prelubricating the oil system with a hand pump and allowing the crankcase heater to be energized 24 hours prior to start up.

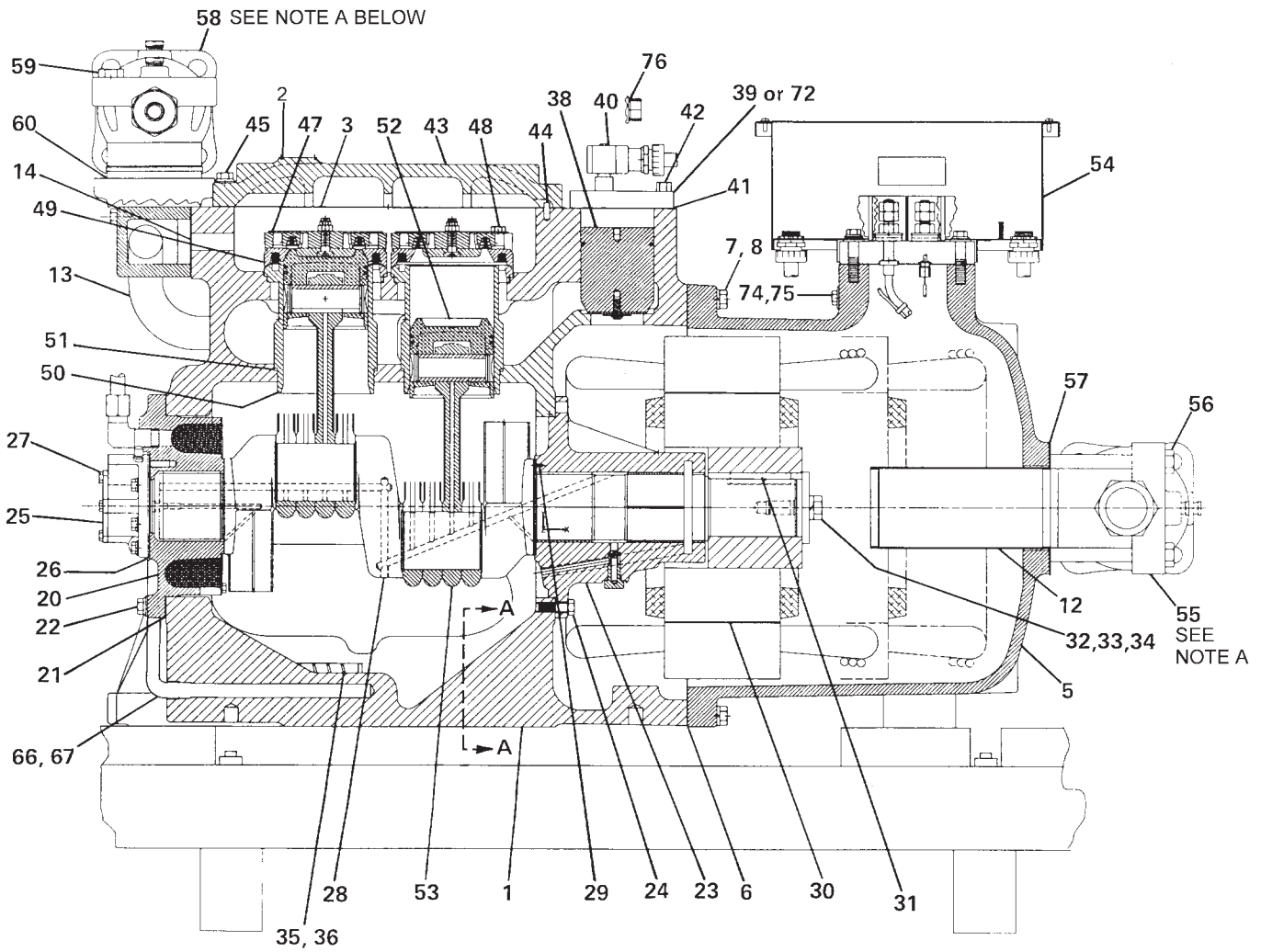
Normal oil pressure range is 30 – 60 PSID.

PRELUBRICATION

To ensure long compressor life, **prelubrication** at start and after long idle periods of several months is recommended. This manual prelude is especially important on R-134a and R-407C units that employ **POE type oil** due to the polar nature of these oils. This is accomplished by attaching a hand pump to the valve core-type access port (schrader fitting) on the oil pump.

See pages 17 and 18 for oil priming pump and maintenance chart.

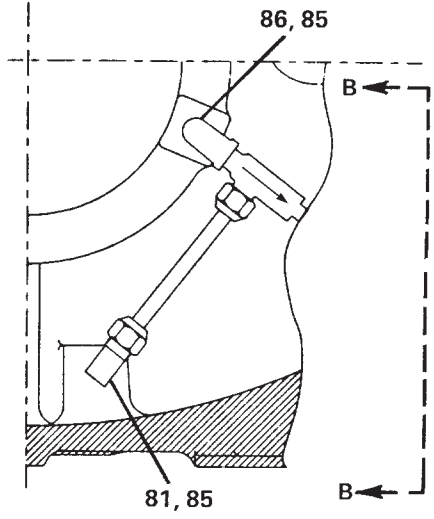
Parts and professional service are available through your local York Service Office. Contact the office listed on the back cover nearest you. Sales and Service offices are also listed on the web at <http://www.york.com/>



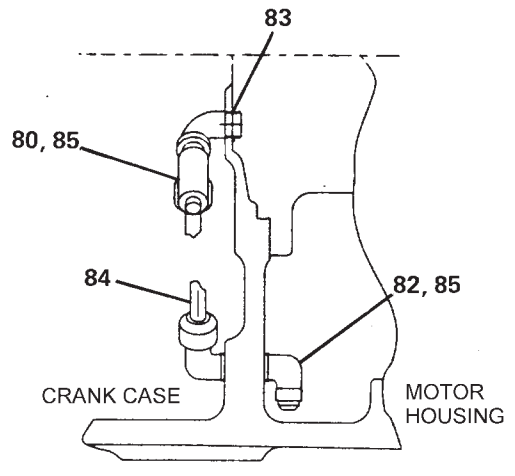
NOTE A:

1. Brass pipe adapter by valve manufacturer Mueller.

NOM. VALVE SIZE	ADAPTER	GASKET
2-1/8	A6267	A6261
2-5/8	A6268	A6261
3-1/8	A6269	A6262



VIEW A-A EDUCATOR



VIEW B-B

LD02966

FIG. 2 - COMPRESSOR

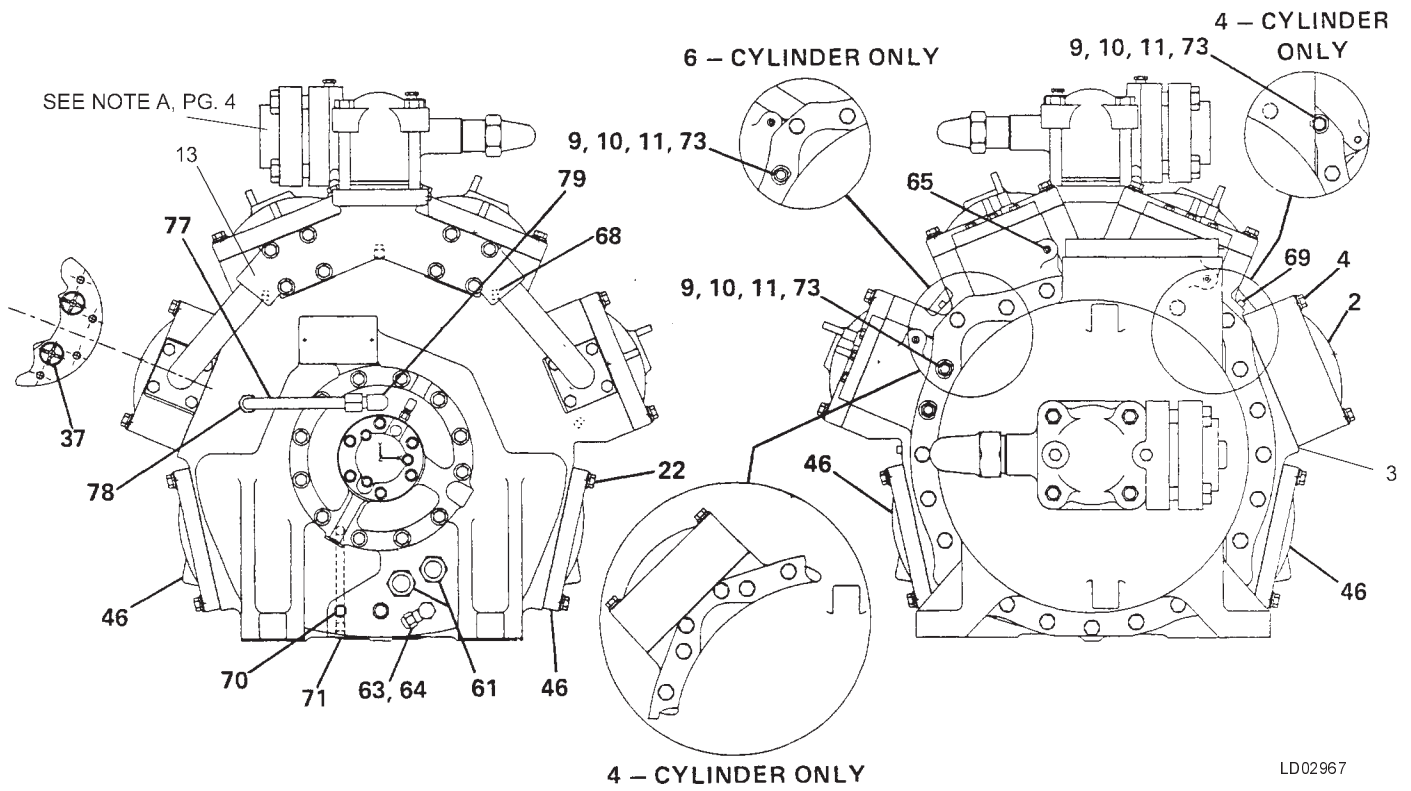
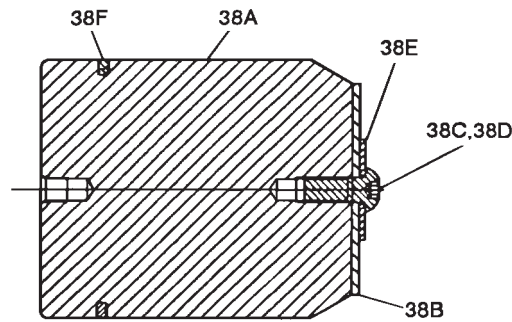


FIG. 3 - COMPRESSOR END VIEWS

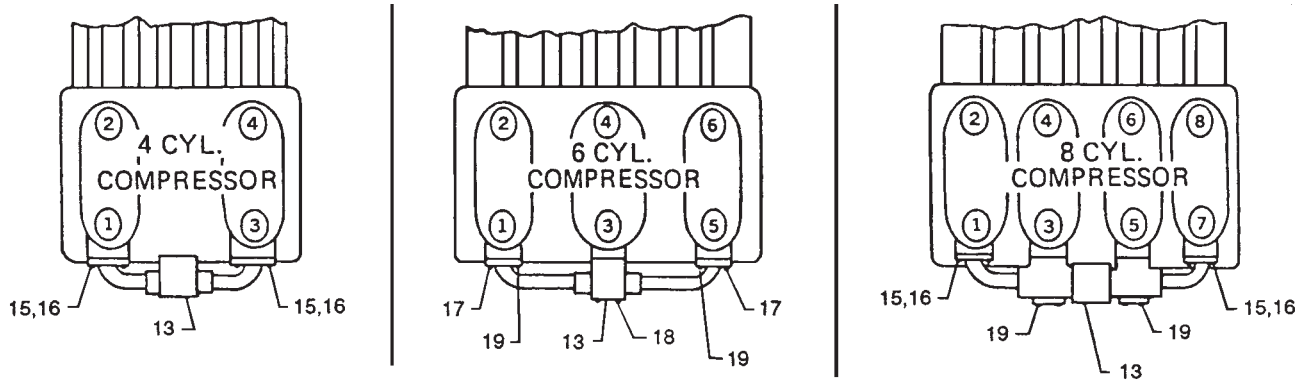


ITEM NO.	DESCRIPTION	PART NUMBER
^s 38	UNLOADER, BLOCKED SUCTION	364-48190-000
38A	PISTON	064-48189-000
38B	WASHER, SEAL	028-12560-000
38C	SCREW, CAP HEX SOCKET	021-17396-000
38D	HEAD	013-01671-000
38E	SEALER, LOCTITE GRADE AVV	021-17220-000
38F	WASHER, PLAIN SPECIAL RING, COMPRESSION ¹	029-20999-000

NOTES:

1. ^s = Recommended Stock Spare Part
2. ¹ = Includes Compression Ring and O-Ring

FIG. 4 - UNLOADING DEVICE



LD03064

FIG. 5 – MANIFOLD ARRANGEMENTS

ITEM NO.	DESCRIPTION	COMPRESSOR		
		4 CYLINDER	6 CYLINDER	8 CYLINDER
1	HOUSING, COMPRESSOR	064-49269-000	064-49270-000	064-49271-000
2	HEAD, TOP, COMPRESSOR	064-48321-000	064-48321-000	064-48321-000
3	GASKET, HEAD AND ACCESS COVER NO. REQUIRED PER COMPRESSOR	028-12559-000 4	028-12559-000 5	028-12559-000 6
4	SCREW, HEAD (16 REQUIRED)	021-17783-000	021-17783-000	021-17783-000
5	COVER, MOTOR	064-48363-000	064-48177-000	064-48178-000
6	GASKET, MOTOR COVER	064-48919-000	064-48918-000	064-48918-000
7	SCREW, 1/2 HEX CAP NO. REQUIRED PER COMPRESSOR	021-18021-000 24	021-18021-000 23	021-18021-000 22
8	LOCKWASHER, HELIC. SPRING NO. REQUIRED PER COMPRESSOR	021-05271-000 24	021-05271-000 23	021-05271-000 22
9	STUD, 1/2 NO. REQUIRED PER COMPRESSOR	021-18697-000 1	021-18697-000 1	021-18697-000 2
10	NUT, 1/2 HEX NO. REQUIRED PER COMPRESSOR	021-11154-000 1	021-11154-000 1	021-11154-000 2
11	WASHER, CLIPPED CIRCULAR NO. REQUIRED PER COMPRESSOR	021-17774-000 1	021-17774-000 1	021-17774-000 2
12	SCREEN, SUCTION (See Item 57 for Gasket)	026-28473-000	026-28473-000	026-28474-000
13	MANIFOLD, DISCHARGE	364-23147-000	064-48320-000	364-21709-000
14	GASKET, DISCH. MANIFOLD NO. REQUIRED PER COMPRESSOR	064-21838-000 2	064-21838-000 3	064-21838-000 4
15	SCREW, 3/8 HEX CAP NO. REQUIRED PER COMPRESSOR	021-01485-000 8	— —	021-01485-000 8
16	WASHER NO. REQUIRED PER COMPRESSOR	021-01274-000 8	— —	021-01274-000 16
17	SCREW, 3/8 HEX FLANGE NO. REQUIRED PER COMPRESSOR	— —	021-17784-000 4	— —
18	SCREW, 3/8 HEX FLANGE NO. REQUIRED PER COMPRESSOR	— —	021-17782-000 4	— —
19	SCREW, 3/8 HEX FLANGE NO. REQUIRED PER COMPRESSOR	— —	021-17781-000 4	021-08875-000 8
20	BEARING HEAD, OIL PUMP END	SEE FIGURE 10		
21	GASKET, BEARING HEAD OIL PUMP END	028-12554-000	028-12554-000	028-12554-000
22	SCREW, HEX FLANGE (44 REQUIRED)	021-17692-000	021-17692-000	021-17692-000
23	BEARING HEAD, MOTOR END	SEE FIGURE 11		
24	SCREW, 7/16 HEX (4 REQUIRED)	021-10387-000	021-10387-000	021-10387-000

ITEM NO.	DESCRIPTION	COMPRESSOR		
		4 CYLINDER	6 CYLINDER	8 CYLINDER
25A	PUMP, OIL (BARE)	026-35003-000	026-35003-000	026-35003-000
26	GASKET, OIL PUMP	028-12556-000	028-12556-000	028-12556-000
27	SCREW, HEX FLANGE (6 REQUIRED)	021-17689-000	021-17689-000	021-17689-000
§28	CRANKSHAFT			
	STROKE 3	364-49221-000	364-49222-000	364-49223-000
	STROKE 4	364-49224-000	364-49225-000	364-49226-000
29	WASHER, THRUST	029-11098-000	029-11098-000	029-11098-000
§30	MOTOR		SEE TABLE 3	
31	KEY, MOTOR	064-26560-000	064-26560-000	064-26560-000
32	WASHER, SHAFT	064-21835-000	064-21835-000	064-21835-000
33	SCREW, 5/8 HEX CAP	021-01630-000	021-01630-000	021-01630-000
34	LOCKWASHER, SHAFT	021-05295-000	021-05295-000	021-05295-000
§35	SCREEN, OIL STRAINER	029-20032-000	029-20032-000	029-20032-000
36	RETAINING CMPD, LOCTITE (Use With Item 35)	013-01752-000	013-01752-000	013-01752-000
§37	VALVE, RELIEF	022-03871-000	022-03871-000	022-03871-000
	NO. REQUIRED PER COMPRESSOR	1	2	2
§38	UNLOADER PISTON		SEE FIGURE 4	
	NO. REQUIRED PER COMPRESSOR		SEE TABLE 1	
§39	VALVE, SOLENOID	025-29999-000	025-29999-000	025-29999-000
	NO. REQUIRED PER COMPRESSOR		SEE TABLE 1	
§40	COIL, SOLENOID (LESS VALVE)			
	120 VOLT	025-30976-000	025-30976-000	025-30976-000
	240 VOLT	025-30977-000	025-30977-000	025-30977-000
	NO. REQUIRED PER COMPRESSOR		SEE TABLE 1	
§41	GASKET, SOLENOID VALVE	028-12558-000	028-12558-000	028-12558-000
	NO. REQUIRED PER COMPRESSOR	1	2	3
42	SCREW, 3/8 HEX CAP	021-17690-000	021-17690-000	021-17690-000
	NO. REQUIRED PER COMPRESSOR	6	12	18
43	COVER, ACCESS	064-48176-000	064-48176-000	064-48176-000
	NO. REQUIRED PER COMPRESSOR	1	2	3
44	PIN, COILED SPRING	029-21378-000	029-21378-000	029-21378-000
	NO. REQUIRED PER COMPRESSOR	1	2	3
45	SCREW, 7/16 HEX FLANGE	021-17693-000	021-17693-000	021-17693-000
	NO. REQUIRED PER COMPRESSOR	16	32	48
46	COVER, HANDHOLD (2 REQUIRED)	064-21645-000	064-21645-000	064-21645-000
47	VALVE CAGE ASSY (DISCHARGE)		SEE FIGURE 6	
	NO. REQUIRED PER COMPRESSOR	4	6	8
48	SCREW, DISCH. VALVE CAGE	021-16827-000	021-16827-000	021-16827-000
	NO. REQUIRED PER COMPRESSOR	16	24	32
49	PLATE, VALVE SUCTION		SEE FIGURE 7	
	NO. REQUIRED PER COMPRESSOR	4	6	8
50	SLEEVE, CYLINDER	064-48192-000	064-48192-000	064-48192-000
	NO. REQUIRED PER COMPRESSOR	4	6	8
51	SEAL, O-RING, CYLINDER SLEEVE	028-12259-000	028-12259-000	028-12259-000
	NO. REQUIRED PER COMPRESSOR ¹		SEE TABLE 1	
§52	PISTON ASSEMBLY		SEE FIGURE 8	
§53	CONNECTING ROD ASSEMBLY		SEE FIGURE 9	
54	TERMINAL BOX		SEE FIGURE 12	

NOTES: § = Recommended Stock Spare Part
¹ = One (1) Required on Each Unloading Cylinder

ITEM NO.	DESCRIPTION	COMPRESSOR		
		4 CYLINDER	6 CYLINDER	8 CYLINDER
55	VALVE, SUCTION STOP VALVE SIZE	022-02844-000 3-1/8"	022-02844-000 3-1/8"	022-02845-000 3-5/8"
56	SCREW, 5/8 HEX CAP (4 REQUIRED)	021-16817-000	021-16817-000	021-16818-000
57	GASKET (2 REQUIRED)	064-47079-000	064-47079-000	064-47204-000
58	VALVE, DISCHARGE STOP VALVE SIZE	022-01394-000 2-5/8"	022-01394-000 2-5/8"	022-02844-000 3-1/8"
59	SCREW, 5/8 HEX CAP (4 REQUIRED)	021-16821-000	021-16821-000	021-16817-000
60	GASKET, DISCH VALVE	064-47078-000	064-47078-000	064-47079-000
^s 61	SIGHT GLASS, OIL (2 REQUIRED)	026-17581-000	026-17581-000	026-17581-000
62	SEALER, REFRIGERANT PIPE ¹	013-02023-000	013-02023-000	013-02023-000
^s 63	VALVE, OIL CHARGING	022-01582-000	022-01582-000	022-01582-000
64	CAP, OIL CHARGING VALVE	023-00977-000	023-00977-000	023-00977-000
65	PIPE PLUG, 1/8 HEX SOCKET NO. REQUIRED PER COMPRESSOR	023-01970-000 1	023-01970-000 2	023-01970-000 3
66	CRANKCASE HEATER - 120V - 240V	025-32938-000 025-32939-000	025-32938-000 025-32939-000	025-32938-000 025-32939-000
67	HEAT CONDUCTIVE COMPOUND	013-00898-000	013-00898-000	013-00898-000
68	DRAIN ORIFICE PLUG, 0.022" NO. REQUIRED PER COMPRESSOR	064-47349-000 1	064-47349-000 2	064-47349-000 3
69	PIPE PLUG, 1/8 HEX SOCKET NO. REQUIRED PER COMPRESSOR	023-01972-000 1	023-01972-000 2	023-01972-000 3
70	SENSOR, OIL TEMP	025-32966-000	025-32966-000	025-32966-000
71	MAGNET (2)	029-22748-000	029-22748-000	029-22748-000
72	COVER PLATE, BLANK ²	064-48187-000	064-48187-000	064-48187-000
73	SEALER, LOCTITE (Use with Item 9)	013-01671-000	013-01671-000	013-01671-000
74	SCREW, 3/8 HEX CAP	021-01458-000	021-01458-000	021-01458-000
75	WASHER	021-01267-000	021-01267-000	021-01267-000
76	SEAL, O-RING, CONDUIT SEAL NO. REQUIRED PER COMPRESSOR	028-03292-000	028-03292-000	028-03292-000
SEE TABLE 1				
OIL RETURN PIPING, PUMP END:				
77	CONNECTOR, BEARING HEAD TO HOUSING	364-49283-000	364-49284-000	364-49285-000
78	CONNECTOR, FLARE NO. REQUIRED PER COMPRESSOR	023-18955-000 2	023-18955-000 1	023-18955-000 1
79	ELBOW	NOT REQUIRED	023-18956-000	023-18956-000
OIL RETURN PIPING, MOTOR END:				
80	EDUCTOR, OIL RETURN	022-09716-000	022-09716-000	022-09716-000
81	VALVE, CHECK	022-09741-000	022-09741-000	022-09741-000
82	ELBOW	023-00868-000	023-00868-000	023-00868-000
83	SEAL, O-RING	028-13896-000	028-13896-000	028-13896-000
84	CONNECTOR, EDUCTOR TO CHECK VALVE	364-49345-000	364-49345-000	364-49345-000
85	SEALER, REMOVABLE THREAD	013-01678-000	013-01678-000	013-01678-000
86	ELBOW, STREET 1/4 X 1/4	023-01685-000	023-01685-000	023-01685-000

NOTES: ^s = Recommended Stock Spare Part

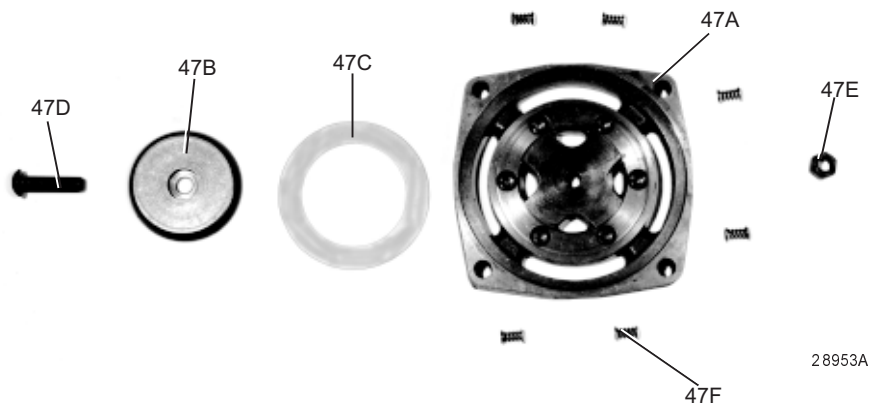
¹ = Not shown. Used for threaded pipe joints

² = Used to Replace Solenoid Valves for Reduced Steps of Unloading. See Table 1.

TABLE 1 – PART QUANTITIES FOR VARIOUS STEPS OF UNLOADING

STEPS OF UNLOADING	ITEM NUMBER										
	38	39	40	51			54W	72			76
				4 Cyl	6 Cyl	8 Cyl		4 Cyl	6 Cyl	8 Cyl	
QUANTITY											
1	1	1	1	2	2	2	11	0	1	2	1
2	2	2	2	NA	4	4	13	NA	0	1	2
3	3	3	3	NA	NA	6	15	NA	NA	0	3

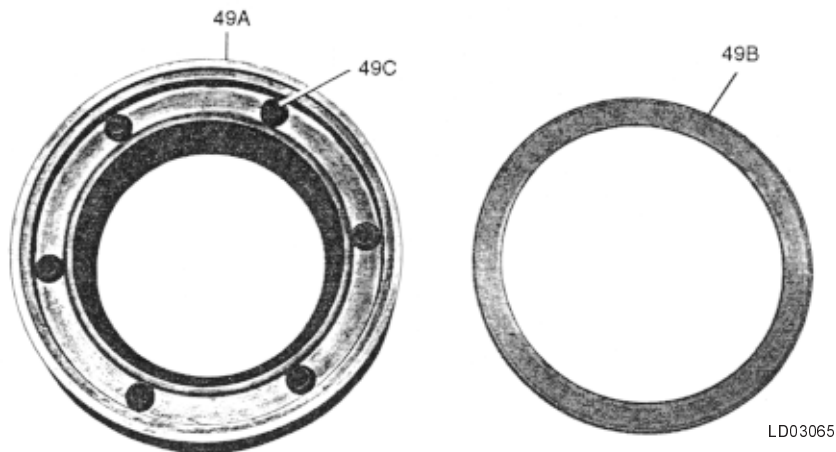
NA = Not Applicable



ITEM NO.	DESCRIPTION	PART NUMBER
^s 47	Cage, Discharge Valve Assembly Includes Items A,B,C,D,E, & F	664-48785-000
47A	Cage, Discharge Valve	064-48787-000
47B	Plate, Inner Valve	064-48032-000
47C	Ring, Discharge Valve	064-43012-000
47D	Screw, 3/8 Button Head Cap	021-17649-000
47E	Nut, 3/8 Hex Self Locking	021-09932-000
47F	Spring, Helical, Pack of 24 No. Springs Required Per Valve Assembly	229-21788-800 6

S = Recommended Stock Spare Part

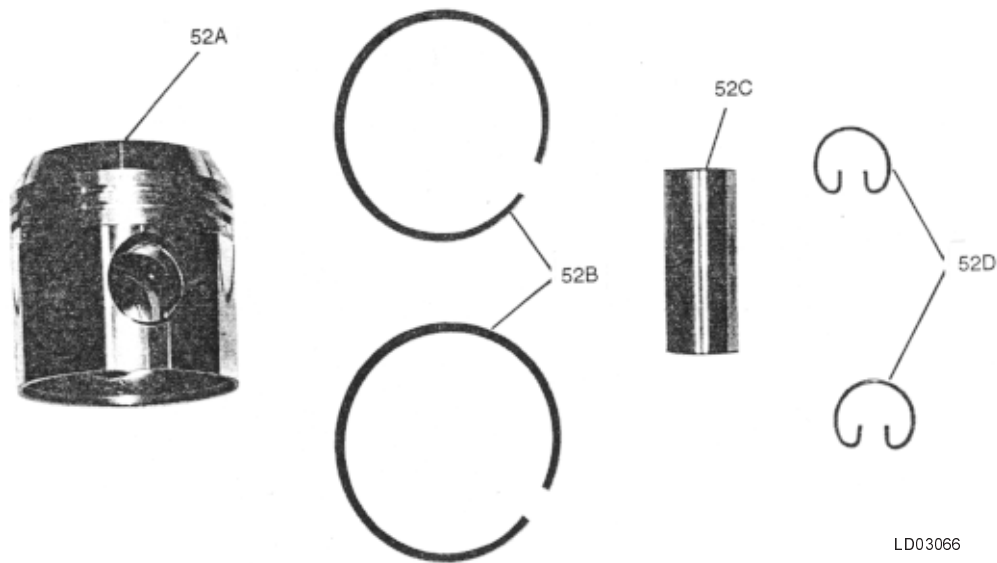
FIG. 6 – DISCHARGE VALVE CAGE ASSEMBLY (See also Table 5 & 6, Page 15)



ITEM NO.	DESCRIPTION	PART NUMBER	
		R-22 (Coil)	R-134a (Wave) (Not Shown)
^s 49	Plate, Suction Valve Assembly Includes Items A, B, & C	364-49264-000	664-49291-000
49A	Plate, Valve	064-49261-000	664-49268-000
49B	Ring, Suction Valve	064-43011-000	022-09743-000
49C	Spring No. Springs Required Per Valve Assy	229-13813-800 6 (Helical) Pack of 24	222-09742-800 2 (Wave) Pack of 2

S = Recommended Stock Spare Part

FIG. 7 – SUCTION VALVE PLATE ASSEMBLY (See also Tables 5 & 6, Page 15)

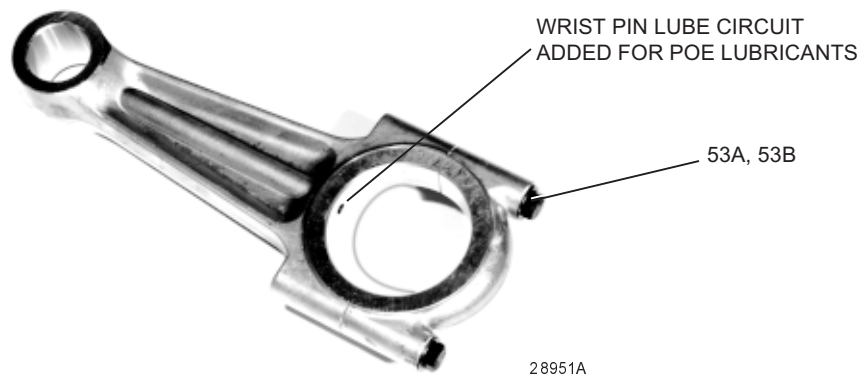


LD03066

ITEM NO.	DESCRIPTION	PART NUMBER
§52	Piston Assembly Includes Items A, B, C, & D	364-46757-000
52A	Piston, Bare	064-46538-000
52B	Ring, Piston (2 Req'd Per Piston)	029-15175-000
52C	Pin, Piston	029-13090-000
52D	Retainer (2 Req'd Per Piston)	029-13091-000

S = Recommended Stock Spare Part

FIG. 8 – PISTON ASSEMBLY

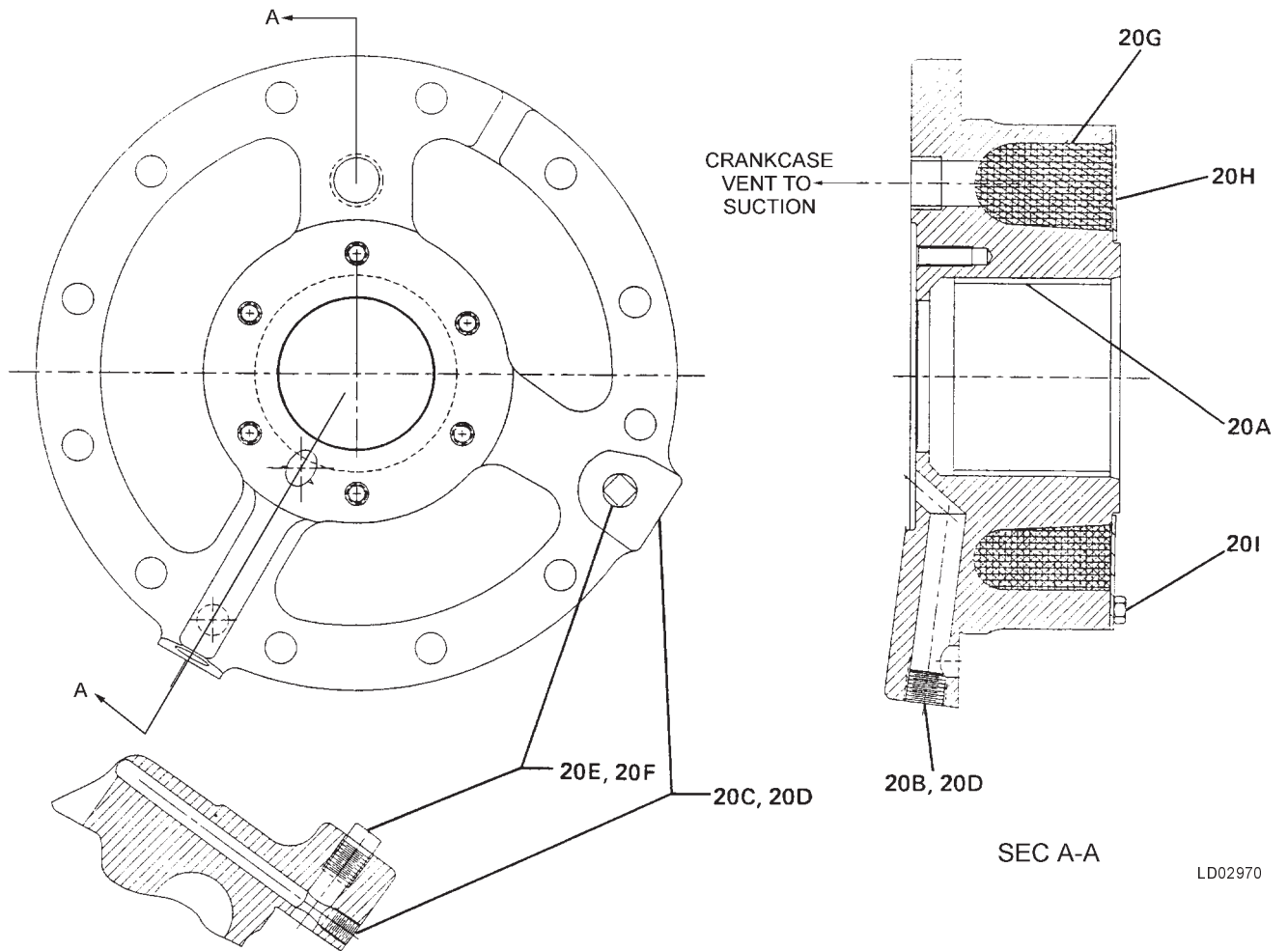


28951A

ITEM NO.	DESCRIPTION	PART NUMBER	
		Short Stroke	Long Stroke
§53	Connecting Rod Assembly R-22 – R-134a Includes Items A, B, & C	664-49011-000	664-49012-000
53A	Screw, 5/16 Hex Cap No. Req'd Per Connecting Rod	021-13665-000 2	021-13665-000 2
53B	Washer (Package of 10) No. Req'd Per Connecting Rod	221-01262-800 2	221-01262-800 2
53C	Dowel Pin (Not Shown) No. Req'd Per Connecting Rod	029-19802-000 2	029-19802-000 2

S = Recommended Stock Spare Part

FIG. 9 – CONNECTING ROD ASSEMBLY

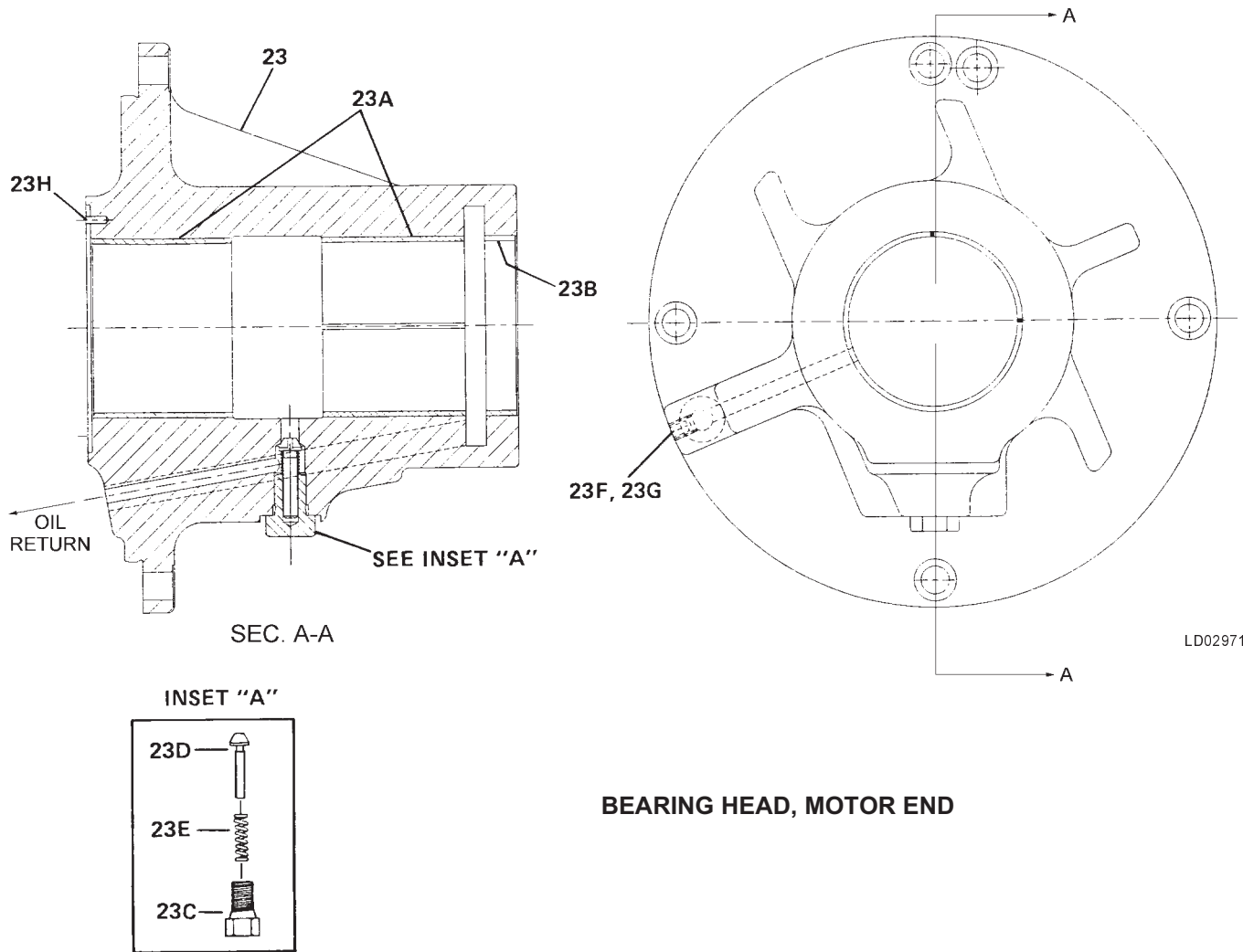


**BEARING HEAD, OIL PUMP END
(OIL PUMP REMOVED)**

ITEM NO.	DESCRIPTION	PART NUMBER
20	Head, Bearing Assembly (Oil Pump End) Includes Items A, B, C, D, E, F, G, H & I	364-49266-000
^S 20A	Bearing, Crankshaft	029-11097-000
20B	Pipe Plug, 3/8 Hex Socket	023-04298-000
20C	Pipe Plug, 1/8 Hex Socket	023-01970-000
20D	Sealer, Loctite Grade AVV (Use With Items 20B and 20C)	013-01671-000
20E	Pipe Plug, 1/4 Square Head	023-01972-000
20F	Sealer, Removable Thread (Use With Item 20E)	013-01678-000
20G	Precipitator Wire Mesh	026-35313-000
20H	Cover	064-49267-000
20I	Cap Screw (6 Required)	021-01361-000
—	Head, Bearing (Oil Pump End) (Does Not Include Items A, B, C, D, E, F, G, H & I)	064-49260-000

S = Recommended Stock Spare Part

FIG. 10 – OIL PUMP END BEARING HEAD



BEARING HEAD, MOTOR END

ITEM NO.	DESCRIPTION	PART NUMBER
23	Head, Bearing Assembly (Motor End) Includes Items A, B, C, D, E, F, G & H	364-49228-000
^S 23A	Bearing, Crankshaft (2 Required)	029-11097-000
23B	Bearing, Crankshaft, Oil Control	029-22495-000
23C	Cap, Seal, Oil Relief Valve (See Inset A)	065-06394-000
23D	Plunger, Oil Relief Valve (See Inset A)	065-01331-000
23E	Spring, Helical (see Inset A)	029-06143-000
23F	Plug, Pipe Flush Type Hex Socket	023-05366-000
23G	Sealer, Loctite Grade AVV (Use With Item 23E)	013-01671-000
23H	Pin, Slot 1/8 Spring	029-05395-000
—	Head, Bearing (Motor End) (Does Not Include Items A, B, C, D, E, F, G & H)	064-49227-000

S = Recommended Stock Spare Part

FIG. 11 – MOTOR END BEARING HEAD

TABLE 2 – COMPRESSOR MOTOR TERMINAL BOX MODEL – A OR B (How to Determine)

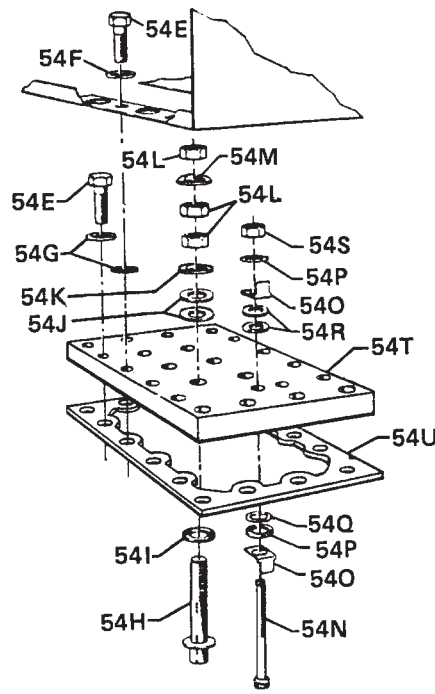
VOLT CODE	MOTOR													
	SIZE													
	M	N	P	Q	S	T	V	M	N	P	Q	S	T	V
STANDARD MOTOR							HIGH EFFICIENCY MOTOR							
17	A	A	A	A	A	NA	B	B	B	B	B	NA		
28	A	A	A	A	A	B	B	A	A	B	B	B	B	B
40	A	A	A	A	A	A	A	A	A	A	A	A	A	B
43	A	A	A	A	A	A	A	NOT AVAILABLE						
46	A	A	A	A	A	A	A	A	A	A	A	A	A	A
50	A	A	A	A	A	A	A	NOT AVAILABLE						
58	A	A	A	A	A	A	A	A	A	A	A	A	A	A
59	A	A	A	A	A	NA	NOT AVAILABLE							
63	A	A	A	A	A	NA	NOT AVAILABLE							
64	A	A	A	A	A	A	A	NOT AVAILABLE						
70	A	A	A	A	A	A	A	NOT AVAILABLE						

COMPRESSOR MOTOR TERMINAL BOX COMPONENTS

(See Figs. 12A and 12B)

ITEM NO.	DESCRIPTION	QUANT	TERMINAL BOX	
			A	B
			PART NUMBER	
54	Terminal Box	1	364-48175-000	364-48704-000
54A	Cover, Terminal Box	1	064-47459-000	064-47459-000
54B	Screw, Tap	9	021-13784-000	021-13784-000
54C	Lockwasher, Internal Tooth	2	021-01133-000	021-01133-000
54D	Screw, Pan Head	2	021-03743-000	021-03743-000
54E	Screw, 3/8 Hex Flange	16	021-17691-000	021-17691-000
54F	Lockwasher, 3/8 Internal Tooth	4	021-01155-000	021-01155-000
54G	Washer, Plain, 7/16 ID x 1 OD	16	021-01267-000	021-01267-000
54H	Bolt, Terminal	6	021-18660-000	021-18473-000
54I	Seal, O-Ring, 7/16 ID	6	028-12551-000	028-12551-000
54J	Washer, Terminal Bolt (Package of 10) Number of Washers Required Per Compressor	— 12	228-09410-800 —	228-09410-800 —
54K	Washer, Plain	6	021-17646-000	021-17646-000
54L	Nut, 7/16 Hex (Package of 6) Number of Nuts Required Per Compressor	— 18	221-12724-800 —	221-12724-800 —
54M	Lockwasher, 7/16 Internal Tooth	6	021-16246-000	021-16246-000
54N	Screw, Cap Hex Soc Hd (Package of 5) Number of Screws Required Per Compressor	— 4	221-14817-800 —	221-14817-800 —
54O	Terminal, Overload	8	025-18650-000	025-18650-000
54P	Washer, Plain, 3/16 ID (Package of 5) Number of Washers Required Per Compressor	— 16	221-18694-800 —	221-18694-800 —
54Q	Seal, O-Ring, 5/32 ID	4	028-09347-000	028-09347-000
54R	Washer, Terminal (Package of 10) Number of Washers Required Per Compressor	— —	228-09525-800 4	228-09525-800 8
54S	Nut, Flange, Serrated	4	021-18936-000	021-18936-000
54T	Terminal Block	1	025-30402-000	025-30402-000
54U	Gasket, Terminal Block	1	028-12557-000	028-12557-000
54V	Spacer, Insulating	2	064-47346-000	064-47346-000
54W	Terminal Block, Flat Base	Note 1	025-20944-000	025-20944-000
54X	Terminal Block End	1	025-20946-000	025-20946-000
54Y	Bar, Jumper (See Note 2)	1	064-47424-000	064-47424-000
54Z	Module, Motor Protector: 115V/230V	1 —	— 025-32838-000	— 025-32838-000

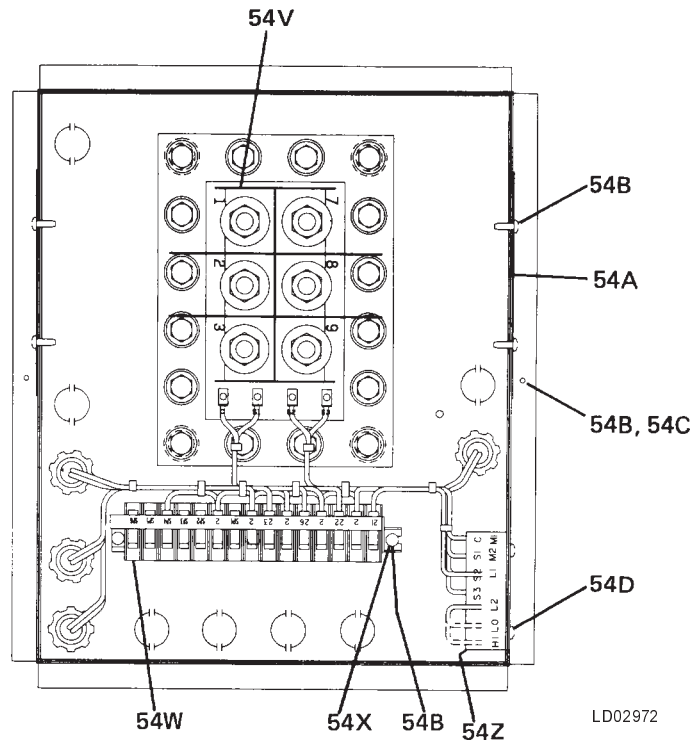
NOTES: 1 = See Table 1, Page 7
2 = (Not Shown) Used in Across-the Line Applications



NOTE: Low temp applications and high humidity environments:

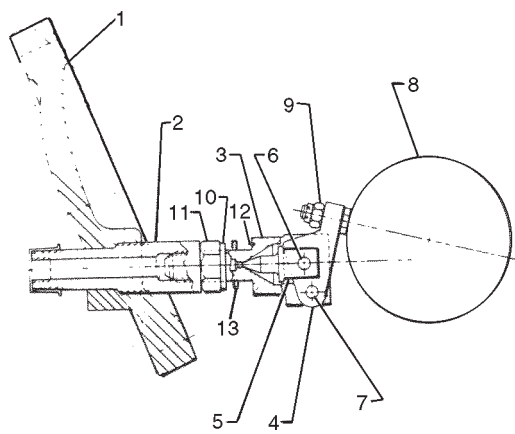
Insulate terminal bolts to prevent condensation and reduce arcing potential. Use 3M Scotchfil Electrical Insulation Putty UPN #15140 or equivalent.

FIG. 12A – MOTOR TERMINAL PLATE DETAIL



LD02972

FIG. 12B – TERMINAL BOX



LD03067

FIG. 13 – CRANKCASE FLOAT

ITEM NO.	DESCRIPTION	PART NO.
	CRANKCASE FLOAT INCLUDES:	
	FLOAT ASSEMBLY	364-26809-000
	FLOAT ASSEMBLY	364-45530-000
1	COVER, HANDHOLE	364-26808-000
2	ADAPTOR	064-26807-000
3	VALVE BODY	064-45531-000
4	LEVER, FLOAT	068-04542-000
5	VALVE, FLOAT	068-04545-000
6	PIN, VALVE	068-01594-000
7	PIN, LEVER	064-02071-000
8	BALL, FLOAT	022-00530-000
9	NUT-HEX SELF-LOCKING (PACKAGE OF 5)	221-09610-800
10	LOCKWASHER	021-05273-000
11	NUT, HEX JAM (PACKAGE OF 10)	221-08073-800
12	PIN, ROLL (PACKAGE OF 5)	229-08228-800
13	GASKET, COPPER	028-03014-000

TABLE 3 – REPLACEMENT MOTORS (ROTOR & STATOR)¹

VOLTAGE	VOLT CODE	MOTOR SIZE CODE ²						
		M	N	P	Q	S	T	V
STANDARD MOTORS								
200-3-60	17	364-47924-001	364-47924-008	364-47924-015	364-47924-022	364-47924-029	—	—
230-3-60/190-3-50	28/59	364-47924-002	364-47924-009	364-47924-016	364-47924-023	364-47924-030	—	—
380-3-60	40	364-47924-003	364-47924-010	364-47924-017	364-47924-024	364-47924-031	364-47924-039	364-47924-047
460-3-60/380/415-3-50	46/50	364-47924-004	364-47924-011	364-47924-018	364-47924-025	364-47924-032	364-47924-040	364-47924-048
575-3-60/500-3-50	58/70	364-47924-005	364-47924-012	364-47924-019	364-47924-026	364-47924-033	364-47924-041	364-47924-049
220-3-50	63	364-47924-006	364-47924-013	364-47924-020	364-47924-027	364-47924-034	—	—
440-3-50	43	364-47924-007	364-47924-014	364-47924-021	364-47924-028	364-47924-035	364-47924-043	364-47924-051
346-3-50	64	364-47924-101	364-47924-102	364-47924-103	364-47924-104	364-47924-105	364-47924-106	364-47924-107
HIGH EFFICIENCY MOTORS								
200-3-60	17	364-49053-001	364-49053-008	364-49053-015	364-49053-022	364-49053-029	—	—
230-3-60	28	364-49053-002	364-49053-009	364-49053-016	364-49053-023	364-49053-030	364-49053-038	364-49053-046
380-3-60	40	364-49053-003	364-49053-010	364-49053-017	364-49053-024	364-49053-031	364-49053-039	364-49053-047
460-3-60	46	364-49053-004	364-49053-011	364-49053-018	364-49053-025	364-49053-032	364-49053-040	364-49053-048
575-3-60	58	364-49053-005	364-49053-012	364-49053-019	364-49053-026	364-49053-033	364-49053-041	364-49053-049

NOTES:

¹ = Replacement motor must be the same size code and voltage code as the original motor, identified by the sixth digit of the Model Number. Rotors and stators are not available separately. Replacement motors include Item 54H. (See Page 12 and Fig. 12, Page 13.)

² = The unused protector leads should be cut off in the area where they exit the bundle. They should be cut off at different lengths (approximately 1/4" difference) to prevent the exposed ends from touching any other component.

**YORK REMANUFACTURED COMPRESSORS ARE AVAILABLE FROM
THE YORK REMANUFACTURING FACILITY IN
WHEELING, ILLINOIS. FOR PRICES AND/OR AVAILABILITY,
CALL 1-800-537-9675 OR FAX 1-847-541-0943.
FOR AFTER HOURS EMERGENCY SERVICE,
CALL 1-847-541-9466**

TABLE 4 – SERVICE AIDS

GASKET KIT**			VALVE RETAINING CLIP	BEARING REMOVAL TOOL	ROTOR MANDREL*	STATOR REMOVAL TOOL
COMPRESSOR MODEL						
4 CYLINDER	6 CYLINDER	8 CYLINDER				
364-48642	364-48643	364-48644	064-37274	364-37260	364-37273	029-13597

* Screws Into End of Crankshaft to Aid in Removing / Installing Rotor

** Depending on application, not all gaskets may be required.

TOP HEAD “VALVE REPLACEMENT” KITS & TOP HEAD “OVERHAUL” KITS

The price of the kits shown below is less than the total price of the individual parts. These kits provide a convenient, economical method of ordering replacement parts.

Each Top Head “Valve Replacement” Kit listed in Table 5 contains the suction and discharge valves, springs, gaskets, screws and nuts that are recommended to be replaced when a valve replacement is required.

Each Top Head “Overhaul” Kit listed in Table 6 contains the suction valves, suction springs, suction valve plates, discharge valve cage assemblies, gaskets, bolts and lockwashers that are recommended to be replaced when a top head overhaul is necessary.

Each kit has all of the recommended parts to service the valves located under one head for each compressor listed.

Included with each kit is a table of threaded torque values.

If servicing a complete compressor, order the Quantities listed in the Table.

Helical coil valve spring replacement must be done after every 5000 hours of running time on both suction and discharge valve assemblies.

R-22

TABLE 5 – TOP HEAD “VALVE REPLACEMENT” KIT

KIT PART NO. EACH KIT CONTAINS	R-22 364-47667-015		
	NO. OF KITS REQUIRED PER COMPRESSOR		
	4 CYL	6 CYL	8 CYL
Suction Valve	2	3	4
Discharge Valve			
Suction Valve Springs			
Discharge Valve Springs			
Top Head Gasket			
Discharge Manifold Gasket			

R-22

TABLE 6 – TOP HEAD “OVERHAUL” KIT

KIT PART NO. EACH KIT CONTAINS	R-22 364-47666-021		
	NO. OF KITS REQUIRED PER COMPRESSOR		
	4 CYL	6 CYL	8 CYL
Suction Valve, Plate & Spgs.	2	3	4
Dschg. Valve Cage Assmby			
Top Head Gasket			
Discharge Manifold Gasket			

* R-134a – 364-47666-020

* R-134a – Order parts separately. See page 9.

YORK OIL

Mineral Oil, R-22, Type C, 5-gallon can – 011-00312-000

POE Oil, R-134a, R-407c, Type H, 5-gallon can – 011-00549-000

OIL CHARGING / PRIMING PUMP



00054VIP

OIL CHARGING PUMP / OIL PRIMER

YORK's specially designed SUPER Oil Charging Pump is a real convenience to anyone operating, maintaining or servicing Refrigerant Compressors. It provides an easy means of charging oil into the compressor via the Schader valve access port on the oil pump without pumping a vacuum on the crankcase.

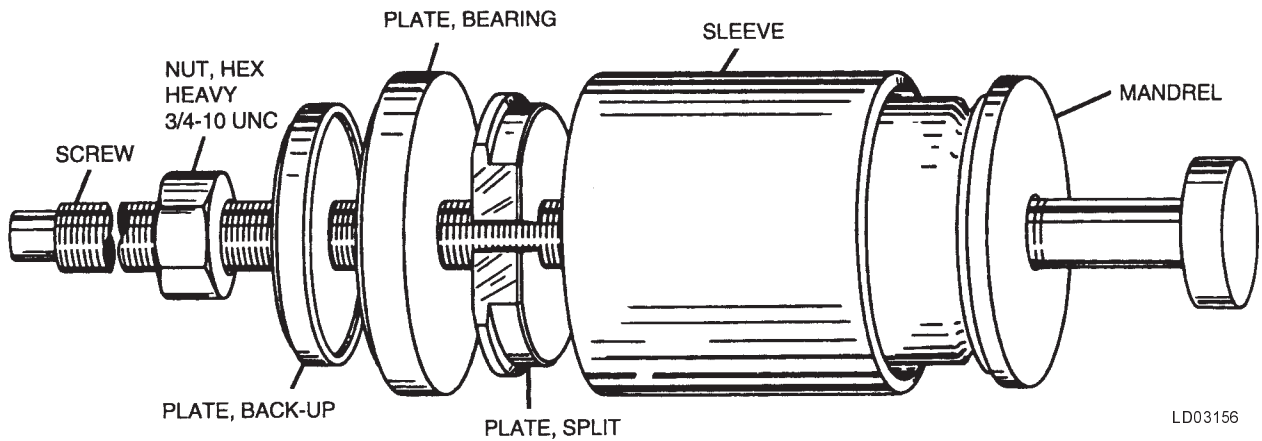
It eliminates the difficulties often encountered by inexperienced operators not familiar with pump-down procedures. It prevents air from getting into the crankcase air which eventually would have found its way to the condenser, resulting in excessive condensing pressures and inefficient operation.

SERVICE AIDS

Crankshaft pre-lube service at start-up and after long idle periods is recommended.



00055VIP



LD03156

FIG. 22 – BEARING REMOVAL TOOL PART NO. 364-37260-000

MAINTENANCE REQUIREMENTS FOR YORK MODEL JK RECIPROCATING COMPRESSORS

PROCEDURE	MONTHLY	QUARTERLY	SEMI-ANNUALLY	PER APPLICATION	EVERY ____*____ HOURS
Leak check		X			
Check oil level	X ¹				
Check oil appearance	X ²				
Check compressor super heat			X ³		
Record operating pressure, temperatures, and motor current readings		X			
Check oil temperatures		X ⁴			
Change oil				X ²	
Replace Suction / Discharge Springs †				X ⁵	

NOTES:

- A. PRE-LUBRICATION – To ensure long compressor life, pre-lubrication at start-up and after long idle periods of several months is recommended. This manual pre-lube is **especially important** on **R-134a** and **R407C** units that employ **POE-type oil** due to the polar nature of these oils. This is accomplished by attaching a hand pump to the core-type access port (schrader fitting) on the oil pump.
- B. Run hours and starts must be recorded on all maintenance and repair records for warranty reimbursement.
- † An Industry Certified Technician should perform this service. Proof of maintenance fulfillment may be required for warranty validation purposes.
- * Reserved for any special site determined requirements.
- ¹ For all models, maintain oil level no higher than the midpoint of the upper sight glass and no lower than the middle of the lower sight glass.
- ² Oil should be golden colored and relatively clear. If contamination is suspected, take an oil sample.
- ³ On typical air conditioning applications, superheat should be 12° to 15°F.
- ⁴ At idle, the crankcase oil heater should maintain a minimum oil temperature 15° to 30°F above ambient. During compressor operation, maximum oil temperature is 160°F.
- ⁵ Helical coil springs used in reciprocating compressor suction and discharge valve assemblies should be replaced every 5,000 hours when used on normal chilled water (40° to 50°F LWT) air conditioning applications. Other applications that may operate at higher-pressure ratios such as low temp brine (20° to 39°F LWT), and units operating under high ambient conditions (ambient temps above 115°F) should have more frequent maintenance intervals.

ALABAMA

Birmingham
YORK International Corp.
(205) 987-0458

ARIZONA

Phoenix
YORK International Corp.
(602) 220-9400

CALIFORNIA

Los Angeles
YORK International Corp.
(714) 897-0997

San Francisco

YORK International Corp.
(510) 426-1166

COLORADO

Denver
YORK International Corp.
(303) 649-1500

CONNECTICUT

Danbury
YORK International Corp.
(203) 730-8100

FLORIDA

Miami
YORK International Corp.
(305) 389-9675

Tampa

YORK International Corp.
(381) 621-1323

Orlando

YORK International Corp.
(407) 444-2261

GEORGIA

Atlanta
YORK International Corp.
(404) 925-0346

HAWAII

Honolulu
YORK International Corp.
(808) 596-0761

ILLINOIS

Chicago
YORK International Corp.
(708) 520-1910

INDIANA

Indianapolis
YORK International Corp.
(317) 595-3050

KENTUCKY

Louisville
YORK International Corp.,
(502) 499-6020

LOUISIANA

New Orleans
YORK International Corp.
(504) 464-6941

MARYLAND

Baltimore/Washington
YORK International Corp.
(410) 720-6383

MASSACHUSETTS

Boston
YORK International Corp.
(781) 769-7950

MICHIGAN

Detroit
YORK International Corp.
(810) 689-7277

MINNESOTA

Minneapolis
YORK International Corp.
(612) 780-4446

MISSOURI

Kansas City
YORK International Corp.
(816) 221-9675

St. Louis

YORK International Corp.
(314) 770-0909

NEW JERSEY

Newark
YORK International Corp.
(908) 225-0606

NEVADA

Las Vegas
YORK International Corp.
(702) 873-2200

NEW YORK

Buffalo
YORK International Corp.
(716) 633-2172

New York

YORK International Corp.
(212) 843-1602

NORTH CAROLINA

Charlotte
YORK International Corp.
(704) 598-0000

Greensboro

YORK International Corp.
(336) 299-9675

Raleigh

YORK International Corp.
(919) 829-1700

OHIO

Cincinnati
YORK International Corp.
(513) 489-8871

Cleveland

YORK International Corp.
(216) 447-0696

Columbus

YORK International Corp.
(614) 841-5242

PENNSYLVANIA

Philadelphia
YORK International Corp.
(610) 640-2320

Pittsburgh

(412) 364-6600

YORK

YORK international Corp.
(717) 771-6561

SOUTH CAROLINA

Greenville
YORK International Corp,
(803) 297-4822

TENNESSEE

Kingsport
YORK International Corp.
(615) 349-2450

Nashville

YORK International Corp.
(615) 833-9675

TEXAS

Austin
YORK International Corp.
(512) 458-4575

Dallas

YORK International Corp.
(214) 241-1219

Houston

YORK International Corp.
(713) 782-5200

San Antonio

YORK International Corp.
(210) 496-6631

UTAH

YORK International Corp.
Salt Lake City
(801) 261-1200

VIRGINIA

Richmond
YORK International Corp.
(804) 359-2600

Newport News

(804) 873-0362

WASHINGTON

Seattle
YORK International Corp,
(206) 251-9145

CANADA **Ottawa, Ontario** **Toronto, Ontario** **Laval, Quebec**
(613) 596-9111 (905) 890-6812 (514) 387-6000

YORK Applied Systems field office listing subject to change.

See us on the web at <http://www.york.com/> for additional information.



Proud Sponsor
of the 1998
U.S. Olympic Team

36USC380